

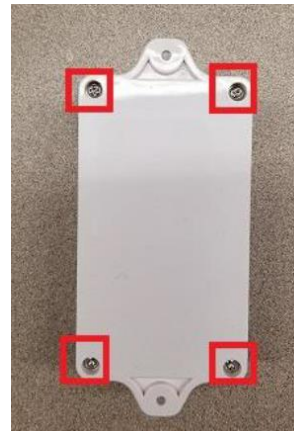


# Replacing Rhino AT Batteries

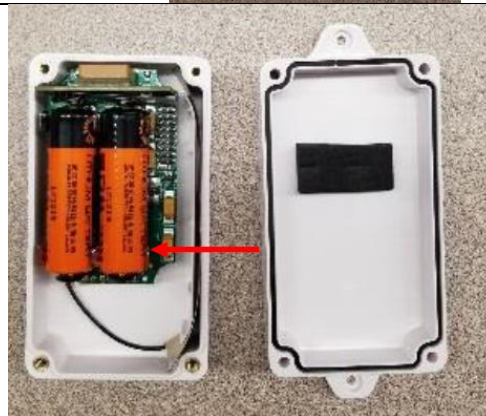
**Note:** Depending on your date of purchase, the casing may either be white or grey as displayed below. White device casing is no longer available. The instructions will feature a white device – the internals are the same regardless of color.



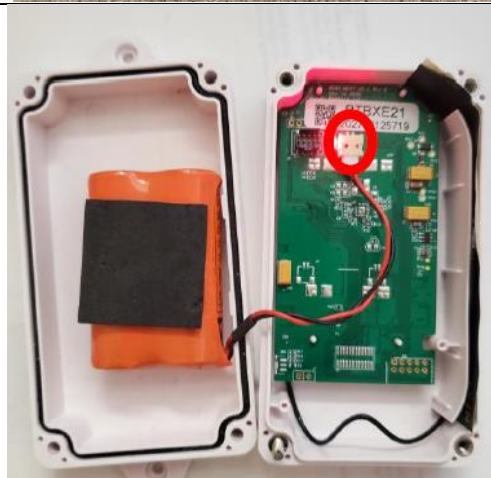
**Step 1:** Carefully separate top and bottom covers by removing the 4 enclosure screws on the back of the device



**Step 2:** Remove the batteries from the device. Use tweezers to carefully lift the batteries one by one.



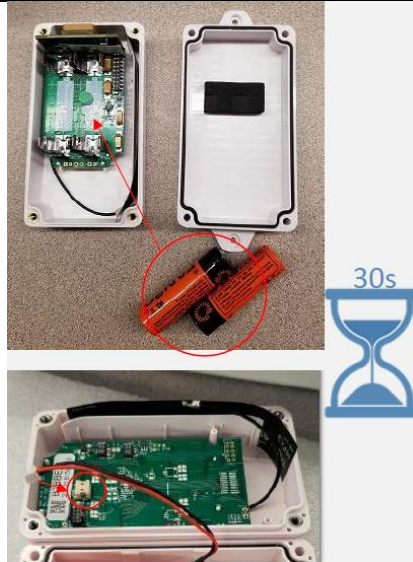
**Step 3:** Carefully unhook the cable linking the battery pack from the board.





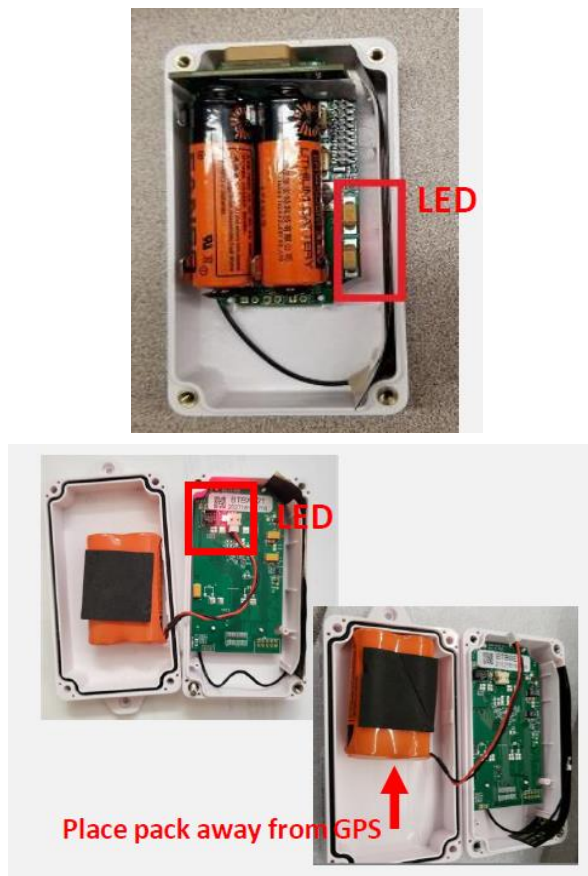
## Replacing Rhino AT Batteries

**Step 4:** Wait 30 seconds prior to inserting/hooks up the new batteries



**Step 5:** Replace the batteries – LED should flash for a second, indicating the device is powered up. Ensure the batteries are placed properly and match the + and – outlined on the device board. Ensure the foam pad is sandwiched between the battery pack and the board and that the battery pack is at the top of the board to avoid obstructing the GPS.

Note: Depending on the manufacture date of the device the LED will either be on the opposite side of the board, you will see a reflection on the enclosure. This is shown in the top photo. Or, the LED will be at the end near the battery connector socket. This is shown in the bottom photo.



**Step 6:** Replace the top cover and ensure top and bottom are aligned before closing the device and securing with screws.

**Important:** When sealing devices after replacing the batteries, please ensure you are using a torque set screwdriver. The torque used to seal device is 0.91 Nm.

